



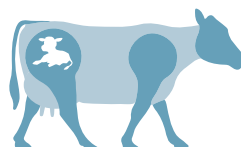
Identify open cows on your schedule, on your farm

The **Alertys™ OnFarm Pregnancy Test** detects pregnancy-associated glycoproteins (PAGs) in whole blood (EDTA) as early as 28 days postbreeding and 70 days postcalving. Use this on-farm pregnancy test to:

- Reduce animal handling and stress.
- Decrease subjectivity and time spent training.
- Read results easily to make decisions quickly.
- Find open animals in just 20 minutes.

Learn more at [idexx.com/onfarm](https://www.idexx.com/onfarm) and order through your distributor.

The **Alertys OnFarm Pregnancy Test** and all **Alertys tests outperform ultrasound and palpation**



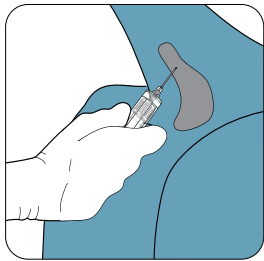
Test name (sample type)	Testing site	Sensitivity		
Alertys™ OnFarm Pregnancy Test (blood)	On your farm or at a veterinary clinic	99.7% ¹	Ultrasound ranges from 77.8%–90.5% ²	Palpation 84.6% ⁴
Alertys™ Milk Pregnancy Test (milk)	At a laboratory	99.2% ²		
Alertys™ Rapid Visual Pregnancy Test (blood)	At a veterinary clinic	98% ³		
Alertys™ Ruminant Pregnancy Test (blood)	At a laboratory	100% ²		

With ultrasound and palpation, **1 to 2 out of 10** pregnant cows are misdiagnosed as open.

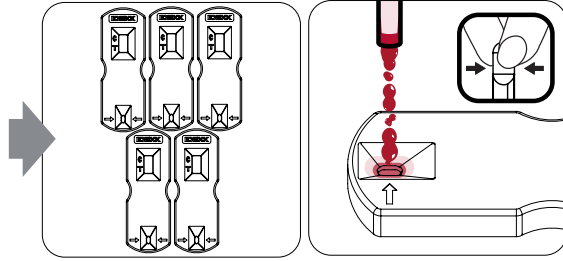


The Alertys™ OnFarm Pregnancy Test is easy to use and easy to read

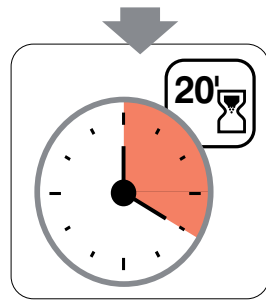
Reduce stress for you and your animals with pregnancy testing you can perform yourself any time your animals are in the parlor or barn. Use this algorithm to know if your cows are pregnant or open.



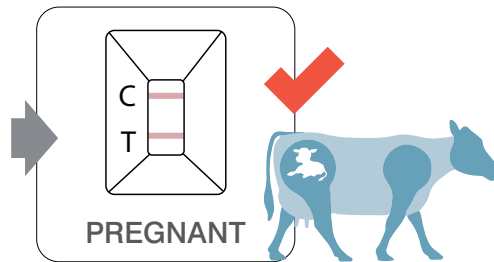
Draw blood from the underside of the tail.



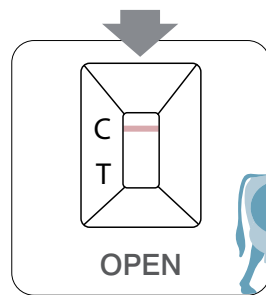
Run multiple tests at the same time.



Read results in just 20 minutes.



PREGNANT



OPEN

Take action:
Cull • Breed • Synchronize

Start testing to identify open animals today!

IDEXX Laboratories, Inc.

One IDEXX Drive
Westbrook, Maine 04092
USA

Tel: +1 207 556 4890 or
+1 800 548 9997
Fax: +1 207 556 4826 or
+1 800 328 5461

IDEXX Europe B.V.

Scorpius 60 Building F
2132 LR Hoofddorp
The Netherlands

Tel: +31 23 558 70 00 or
+800 727 43399
Fax: +31 23 558 72 33

IDEXX Laboratories, Inc.

3F-5 No. 88, Rei Hu Street
Nei Hu District
11494 Taipei
Taiwan

Tel: +886 2 6603 9728
Fax: +886 2 2658 8242

IDEXX Brasil

1478 Av. Brig. Faria Lima
São Paulo, SP
Brasil

Tel: +55 11 3095-5632
Fax: +55 11 3095-5641

References

1. Data on file at IDEXX Laboratories, Inc. Westbrook, Maine USA.
2. Fosgate GT, Motimele B, Ganswindt A, Irons PC. A Bayesian latent class model to estimate the accuracy of pregnancy diagnosis by transrectal ultrasonography and laboratory detection of pregnancy-associated glycoproteins in dairy cows. *Prev Vet Med.* 2017;145:100-109. doi:10.1016/j.pvetmed.2017.07.004
3. Mayo LM, Moore SG, Pooch SE, Silvia WJ, Lucy MC. Technical note: Validation of a chemical pregnancy test in dairy cows that uses whole blood, shortened incubation times, and visual readout. *J Dairy Sci.* 2016;99(9):7634-7641. doi:10.3168/jds.2016-11224
4. Ghaidan MT, Dana OI, Dyary HO. Accuracy of bovine pregnancy-associated glycoproteins (bPAGs) in the diagnosis of pregnancy: A comparative study of three pregnancy diagnostic methods. *Pol J Vet Sci.* 2019;22(4):769-775. doi:10.24425/pjvs.2019.131409

© 2021 IDEXX Laboratories, Inc. All rights reserved. • 09-2451838-01
All ®/TM marks are owned by IDEXX Laboratories, Inc. or its affiliates in the United States and/or other countries. The IDEXX Privacy Policy is available at idexx.com.

Test with Confidence™

IDEXX